

## HUMAN DEVELOPMENT RESEARCH REVIEW



### CONTENTS

[HELP FACULTY and AFFILIATE](#)

[BIOLOGY/NEUROBIOLOGY \(“early experiences”\)](#)

[CHILDCARE, ECD SERVICES](#)

[CHILD DEVELOPMENT \(GENERAL\)](#)

[ENVIRONMENTAL HEALTH](#)

[INDIGENOUS](#)

[MIDDLE YEARS](#)

[POLICY, PRACTICE, INTERVENTIONS](#)

[SCREENING](#)

[SOCIAL DETERMINANTS \(Income, Employment, Housing, Food Security, Inequity, etc\)](#)

[SOCIOEMOTIONAL](#)

[SPECIAL \(COVID-19, media, other\)](#)

---

### HUMAN DEVELOPMENT RESEARCH REVIEW: AIMS AND SCOPE

HELP’s Human Development Research Review (*HELP Reads*) aims to expand awareness of topics in human development, particularly social epigenetics, social determinants of health, socio-emotional learning, Indigenous children and youth, and family policy. *HELP Reads* connects health academics, advocates, and professionals with online and publicly available research, news, and information. This review focuses on listing articles relevant to human development research activities at HELP. The review accepts and welcomes contributions provided they meet *HELP Reads* standards. This review is not official or peer reviewed. It does not cover all research, news, and information, and HELP is not responsible for the accuracy of the content from media or databases. Not all links are open access; some are abstract links where paid journal subscription is required. *HELP Reads* is posted monthly [here](#).

## EDITOR PICKS

### The role of play and objects in children's deep-level learning in early childhood education.

Mariana Brussoni, Director, Human Early Learning Partnership, and co-authors

*"The results demonstrate a positive association between children's engagement in play, their utilization of objects, and deep-level learning. [...] These outcomes highlight the pivotal role of play in early childhood education and emphasize how elements within the physical environment can effectively support children's learning."*



### "We do it anyway": Professional identities of teachers who enact risky play as a framework for Education Outdoors.

Megan Zeni, PhD Candidate, UBC, Faculty of Education, and co-authors

*"This study offers insight into the funds of knowledge, dispositions, and professional identities of elementary school teachers who embrace risky play as a pedagogical practice and how they navigate systemic challenges unique to education outdoors."*



### Understanding & promoting well-being in middle childhood: MDI trends & data dashboard [webinar].

Eva Oberle, Associate Professor, Human Early Learning Partnership, UBC, with others

*This webinar describes the Middle Years Development Instrument, MDI data trends over time, the MDI data dashboard and more.*



### Risk factors for developmental vulnerability: Insight from population-level surveillance using the Early Development Instrument.

Magdalena Janus, Affiliate Associate Professor, School of Population and Public Health, and co-authors

*"The results confirm evidence established in other geographic regions and jurisdictions and demonstrate the association between perinatal risk factors and developmental vulnerability. Based on these results, we argue that the health system should adopt..."*



### Anxiety symptoms, psychological distress, and optimism in school staff: Testing associations with stressors and coping during the second year of the COVID-19 pandemic.

Anne Gadermann, Associate Professor, Human Early Learning Partnership, UBC, and co-authors

*"Results showed that participants' perceived risk of getting COVID-19 was associated with poorer mental health among both male and female school staff. [...] These findings underlie the importance of proactive prevention and intervention strategies..."*



## EDITOR PICKS

### Still left out: children and youth with disabilities in B.C.

Representative for Children and Youth

*“Families of children with disabilities are still struggling with a system of supports and services that is under-resourced, filled with closed doors and lengthy wait lists for assessments and treatment, cumbersome to navigate and difficult for parents to understand.”*



### Mental health and our changing climate: children and youth report 2023.

American Psychological Association and ecoAmerica

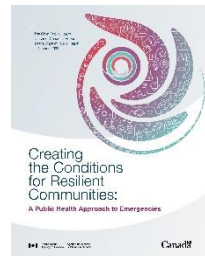
*“Research on youth, climate, and mental health has accelerated, and many new findings have emerged. With this report, we aim to provide readers with information and guidance to understand and support children and youth, and take effective action.”*



### Creating the conditions for resilient communities: a public health approach to emergencies. Chief Public Health Officer of Canada's Report on the State of Public Health in Canada 2023.

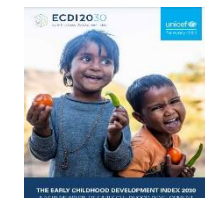
Public Health Agency of Canada

*“We need to shift how we think about emergencies by looking beyond the immediate response and working on the foundational conditions that keep our communities healthy.”*



### The Early Childhood Development Index 2030. A new measure of ECD. UNICEF

*“The ECDI2030 addresses the need for nationally representative and internationally comparable data on early childhood development, collected in a standardized way.”*



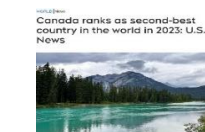
### How healthy are people in Canada? An indicators dashboard.

Public Health Agency of Canada

*“People in Canada generally live long and healthy lives, but not everyone has the same opportunity for good health. This dashboard explores the health of our population using more than 50 interactive indicators*



### Canada ranks as second-best country in the world in 2023: U.S. News. CTV News



## HUMAN DEVELOPMENT RESEARCH REVIEW

### HELP FACULTY and AFFILIATE (selected publications)

1. Hutchison SM, González OD-J, Watts A, Oberle E, Gadermann A, Goldfarb DM, et al. **Anxiety symptoms, psychological distress, and optimism in school staff: Testing associations with stressors and coping during the second year of the COVID-19 pandemic.** *Journal of Affective Disorders Reports.* 2023;14:100662. Available from: <https://www.sciencedirect.com/science/article/pii/S2666915323002007>.
2. Sando OJ, Sandseter EBH, Brussoni M. **The role of play and objects in children's deep-level learning in early childhood education.** *Education Sciences.* 2023;13(7). Available from: <https://doi.org/10.3390/educsci13070701>.
3. Talarico F, Liu YS, Metes D, Wang M, Wearmouth D, Kiyang L, et al. **Risk factors for developmental vulnerability: Insight from population-level surveillance using the Early Development Instrument.** *Digit Health.* 2023;9:20552076231210705. Available from: <https://doi.org/10.1177/20552076231210705>.
4. Zeni M, Schnellert L, Brussoni M. **"We do it anyway": Professional identities of teachers who enact risky play as a framework for Education Outdoors.** *Journal of Outdoor and Environmental Education.* 2023. Available from: <https://doi.org/10.1007/s42322-023-00140-6>.

### HELP RESOURCES

1. Oberle E. **Understanding & promoting well-being in middle childhood: MDI trends & data dashboard.** Vancouver, BC: University of British Columbia, Faculty of Medicine, School of Population and Public Health, Human Early Learning Partnership; 2023 Nov 3. Available from: <https://earlylearning.ubc.ca/app/uploads/2023/10/MDI-Webinar-Oct19-2023-FINAL-for-sharing.pptx.pdf>.
2. University of British Columbia. **Dr. Mariana Brussoni co-developed a new online tool to help teachers take their classes outdoors [SPPH Newsletter - Issue 86].** Vancouver, BC: Faculty of Medicine, School of Population and Public Health; 2023 Nov 1. Available from: <https://spph.ubc.ca/dr-mariana-brussoni-co-developed-a-new-online-tool-to-help-teachers-take-their-classes-outdoors/>.

### BIOLOGY/NEUROBIOLOGY ("early experiences")

1. Jones SL, Caccese C, Davis KP, Lew J, Elgbeili G, Herba CM, et al. **Longitudinal associations between paternal mental health and child behavior and cognition in middle childhood.** *Front Psychol.* 2023;14. Available from: <https://www.frontiersin.org/articles/10.3389/fpsyg.2023.1218384>.
2. Racine N, Deneault A-A, Thiemann R, Turgeon J, Zhu J, Cooke J, Madigan S. **Intergenerational transmission of parent adverse childhood experiences to child outcomes: A systematic review and meta-analysis.** *Child Abuse Negl.* 2023. Available from: <https://doi.org/10.1016/j.chiabu.2023.106479>.

## CHILDCARE, ECD SERVICES, OTHER

1. Brunsek A, Rodrigues M, Sokolovic N, Borairi S, Janmohamed Z, Jenkins JM, Perlman M. **Can a brief professional development improve early childhood educators' responsivity and interaction quality in child care centers? A cluster randomized controlled trial.** Early Education and Development. 2023. Available from: <https://doi.org/10.1080/10409289.2023.2274302>.
2. Purkait T, Dev D, Srivastava D, Franzen-Castle L. **The Impact of FNAPs on Young Children's Food Environment in ECEs: A Systematic Review Using the RE-AIM Framework.** Journal of Nutrition Education & Behavior. 2023;55(7):42-3. Available from: <https://doi.org/10.1016/j.ineb.2023.05.092>.

### *Children/Youth in Care; Children/Youth with Disabilities*

1. Family and Community Services Insights AaRF. **What factors impact placement stability for children in out-of-home care? Key findings from the evidence.** NSW: FACSIAR; 2023 Jul. Available from: [https://www.facs.nsw.gov.au/data/assets/pdf\\_file/0011/847937/32-2023-placement-stability-summary.pdf](https://www.facs.nsw.gov.au/data/assets/pdf_file/0011/847937/32-2023-placement-stability-summary.pdf).
2. Lee JS, Gimm G, Mohindroo M, Lever L. **Assessing Homelessness and Incarceration Among Youth Aging Out of Foster Care, by Type of Disability.** Child Adol Soc Work J. 2023;40(6):743-59. Available from: <https://link.springer.com/article/10.1007/s10560-022-00817-9>.
3. Representative for Children and Youth. **Still left out: children and youth with disabilities in B.C.** Victoria, BC: Representative for Children and Youth; 2023 Nov. Available from: [https://rcybc.ca/wp-content/uploads/2023/11/RCY\\_Still-Left-Out\\_Nov2023\\_Final\\_10-Nov-2023.pdf](https://rcybc.ca/wp-content/uploads/2023/11/RCY_Still-Left-Out_Nov2023_Final_10-Nov-2023.pdf).
4. Vowels LM, Comolli CL, Bernardi L, Chacón-Mendoza D, Darwiche J. **Systematic review and theoretical comparison of children's outcomes in post-separation living arrangements.** PLoS One. 2023;18(6):e0288112. Available from: <https://doi.org/10.1371/journal.pone.0288112>.

## CHILD DEVELOPMENT (GENERAL)

1. van Rooijen M, De Martelaer K, Lensvelt-Mulders G, van der Poel L, Cotterink M. **"It is scary, but then i just do it anyway": children's experiences and concerns about risk and challenge during loose parts play.** Int J Environ Res Public Health. 2023;20(22):7032. Available from: <https://www.mdpi.com/1660-4601/20/22/7032>.
2. Vanderloo LM, Saravanamuttoo K, Bourke M, Zhong S, Szpunar M, Gilliland J, et al. **Parents' attitudes regarding their children's play during COVID-19: Impact of socioeconomic status and urbanicity.** SSM - Population Health. 2023:101549. Available from: <https://www.sciencedirect.com/science/article/pii/S2352827323002148>.

### *Literacy, Language*

1. Connolly P, Sebba J, Winter K, Roberts J, Tah P, Millen S. **The effectiveness of book-gifting programmes to enhance the reading skills of children in care: A randomised controlled trial of 'Reading Together' in England.**



- Children Youth Serv Rev. 2023;153:N.PAG-N.PAG. Available from:  
<https://doi.org/10.1016/j.childyouth.2023.107097>.
2. Fung P, St Pierre T, Raja M, Johnson EK. **Infants' and toddlers' language development during the pandemic: Socioeconomic status mattered.** J Exp Child Psychol. 2023;236:105744. Available from:  
<https://doi.org/10.1016/j.jecp.2023.105744>.
  3. Pfost M, Heyne N. **Joint book reading, library visits and letter teaching in families: relations to parent education and children's reading behavior.** Reading & Writing. 2023;36(10):2627-47. Available from:  
<https://link.springer.com/article/10.1007/s11145-022-10389-w>.
  4. Read K, Rabinowitz S, Harrison H. **It's the talk that counts: a review of how the extra-textual talk of caregivers during shared book reading with young children has been categorized and measured.** Journal of Early Childhood Literacy. 2023;1. Available from: <https://doi.org/10.1177/14687984231202968>.

### *Screentime*

1. Bustamante JC, Fernández-Castilla B, Alcaraz-Iborra M. **Relation between executive functions and screen time exposure in under 6 year-olds: A meta-analysis.** Comput Human Behav. 2023;145:107739. Available from:  
<https://www.sciencedirect.com/science/article/pii/S0747563223000900>.
2. Chong SC, Teo WZ, Shorey S. **Exploring the perception of parents on children's screentime: a systematic review and meta-synthesis of qualitative studies.** Pediatr Res. 2023;94(3):915-25. Available from:  
<https://www.ncbi.nlm.nih.gov/pubmed/36966270>.
3. Fitzpatrick C, Binet M-A, Cristini E, Almeida ML, Bégin M, Frizzo GB. **Reducing harm and promoting positive media use strategies: new perspectives in understanding the impact of preschooler media use on health and development.** Psicologia: Reflexão e Crítica. 2023;36(1):19. Available from:  
<https://doi.org/10.1186/s41155-023-00262-2>.
4. Forte C, O'Sullivan D, McDowell CP, Hallgren M, Woods CB, Herring MP. **Associations between screen-time, physical activity and depressive symptoms differ based on gender and screen-time mode.** Eur Child Adolesc Psychiatry. 2023;32(11):2313-22. Available from: <https://www.ncbi.nlm.nih.gov/pubmed/36097092>.
5. Gingras M-P, Brendgen M, Beauchamp MH, Séguin JR, Tremblay RE, Côté SM, Herba CM. **Adolescents and Social Media: Longitudinal Links Between Types of Use, Problematic Use and Internalizing Symptoms.** Research on Child & Adolescent Psychopathology. 2023;51(11):1641-55. Available from:  
<https://doi.org/10.1007/s10802-023-01084-7>.
6. Graciano J. **The Perils of Gadgets for Toddlers: An In-Depth Exploration of Potential Hazards on Physical, Cognitive, and Socio-Emotional Development.** Influence: International Journal of Science Review. 2023;5(2):426-37. Available from: <https://influence-journal.com/index.php/influence/article/view/171>.
7. Honda M, Togo F. **2.59 The Relationship Between Adolescent Mental Health and Passive Use and Active Use of Social Media.** J Am Acad Child Adolesc Psychiatry. 2023;62(10):S199-S. Available from:  
<https://doi.org/10.1016/j.jaac.2023.09.146>.
8. Horowitz-Kraus T, Fotang J, Niv L, Apter A, Hutton J, Farah R. **Executive functions abilities in preschool-age children are negatively related to parental EF, screen-time and positively related to home literacy environment: an EEG study.** Child Neuropsychol. 2023;1-22. Available from:  
<https://www.ncbi.nlm.nih.gov/pubmed/37906176>.
9. Muppalla SK, Vuppapapati S, Reddy Pulliahgaru A, Sreenivasulu H. **Effects of Excessive Screen Time on Child Development: An Updated Review and Strategies for Management.** Cureus. 2023;15(6):e40608. Available from: <https://doi.org/10.7759%2Fcureus.40608>.
10. Oduro MS, Katey D, Morgan AK, Peprah P. **Problematic social media use and overweight/obesity: Explanatory pathway analysis of 124 667 in-school adolescents in 39 high-income countries.** Pediatr Obes. 2023;18(11). Available from: <https://doi.org/10.1111/ijpo.13073>.

11. Priftis N, Panagiotakos D. **Screen Time and Its Health Consequences in Children and Adolescents**. *Children*. 2023;10(10):1665. Available from: <https://www.mdpi.com/2227-9067/10/10/1665>.
12. Sanders T, Noetel M, Parker P, Del Pozo Cruz B, Biddle S, Ronto R, et al. **An umbrella review of the benefits and risks associated with youths' interactions with electronic screens**. *Nature human behaviour*. 2023. Available from: <https://doi.org/10.1038/s41562-023-01712-8>.
13. Sarfraz S, Shlaghya G, Narayana SH, Mushtaq U, Shaman Ameen B, Nie C, et al. **Early Screen-Time Exposure and Its Association With Risk of Developing Autism Spectrum Disorder: A Systematic Review**. *Cureus*. 2023;15(7):e42292. Available from: <https://doi.org/10.7759/cureus.42292>.
14. Wallace J, Boers E, Ouellet J, Afzali MH, Conrod P. **Screen time, impulsivity, neuropsychological functions and their relationship to growth in adolescent attention-deficit/hyperactivity disorder symptoms**. *Sci Rep*. 2023;13(1):18108. Available from: <https://doi.org/10.1038/s41598-023-44105-7>.
15. Wallace J, Boers E, Ouellet J, Conrod P. **A Population-Based Analysis of the Temporal Association of Screen Time and Aggressive Behaviors in Adolescents**. *JAACAP Open*. 2023. Available from: <https://doi.org/10.1016/j.jaacop.2023.08.002>.
16. Wilhite K, Booker B, Huang B-H, Antczak D, Corbett L, Parker P, et al. **Combinations of Physical Activity, Sedentary Behavior, and Sleep Duration and Their Associations With Physical, Psychological, and Educational Outcomes in Children and Adolescents: A Systematic Review**. *Am J Epidemiol*. 2022;192(4):665-79. Available from: <https://doi.org/10.1093/aje/kwac212>.
17. Wood G, Goodyear V, Adab P, Al-Janabi H, Fenton S, Jones K, et al. **Smartphones, social Media and Adolescent mental well-being: the impact of school policies Restricting dayTime use-protocol for a natural experimental observational study using mixed methods at secondary schools in England (SMART Schools Study)**. *BMJ open*. 2023;13(7):e075832. Available from: <https://bmjopen.bmj.com/content/13/7/e075832>.
18. Wu D, Dong X, Liu D, Li H. **How Early Digital Experience Shapes Young Brains During 0-12 Years: A Scoping Review**. *Early Education and Development*.1-37. Available from: <https://doi.org/10.1080/10409289.2023.2278117>.
19. Yang S, Said M, Peyre H, Ramus F, Taine M, Law EC, et al. **Associations of screen use with cognitive development in early childhood: the ELFE birth cohort**. *Journal of Child Psychology and Psychiatry*. 2023;n/a(n/a). Available from: <https://acamh.onlinelibrary.wiley.com/doi/abs/10.1111/jcpp.13887>.

## ENVIRONMENTAL HEALTH

1. Hackett F, Pétrin-Desrosiers C, Kalogirou MR, Buse CG. **The Lancet Countdown on Health and Climate Change: Policy Brief for Canada. Canada's health systems under strain from climate change: new policy brief**. *The Lancet*. 2023. Available from: [https://www.cpha.ca/sites/default/files/uploads/advocacy/2023\\_lancet/2023-TLC-Policy-Brief-for-Canada\\_final\\_e.pdf](https://www.cpha.ca/sites/default/files/uploads/advocacy/2023_lancet/2023-TLC-Policy-Brief-for-Canada_final_e.pdf).
2. Romanello M, Napoli Cd, Green C, Kennard H, Lampard P, Scamman D, et al. **The 2023 report of the Lancet Countdown on health and climate change: the imperative for a health-centred response in a world facing irreversible harms**. *The Lancet*. 2023. Available from: [https://doi.org/10.1016/S0140-6736\(23\)01859-7](https://doi.org/10.1016/S0140-6736(23)01859-7).
3. BBC News. **How forest schools boost children's immune systems**. London, ON: BBC; 2023 Oct 31. Available from: <https://www.bbc.com/future/article/20231031-how-forest-schools-boost-childrens-immune-systems>.
4. UK Health Security Agency. **Climate change and public health indicators: scoping review**. London: UK Government; 2023 Sep. Available from: [https://assets.publishing.service.gov.uk/government/uploads/system/uploads/attachment\\_data/file/1180658/climate-change-and-public-health-indicators-scoping-review.pdf](https://assets.publishing.service.gov.uk/government/uploads/system/uploads/attachment_data/file/1180658/climate-change-and-public-health-indicators-scoping-review.pdf).

## INDIGENOUS

1. Cunningham C, Mercury M. **Coproducing health research with Indigenous peoples.** Nat Med. 2023. Available from: <https://doi.org/10.1038/s41591-023-02588-x>.
2. Guiberson M, Vining CB. **Culturally Responsive and Indigenous Language Strategies: Findings From a Scoping Review.** Communication Disorders Quarterly. 2023;45(1):3-19. Available from: <https://doi.org/10.1177/15257401231155812>.
3. Jumah NA, Kewayosh A, Downey B, Campbell Senese L, Tinmouth J. **Developing a Health Equity Impact Assessment ‘Indigenous Lens Tool’ to address challenges in providing equitable cancer screening for indigenous peoples.** BMC Public Health. 2023;23(1):2250. Available from: <https://doi.org/10.1186/s12889-023-16919-7>.
4. Lloyd-Johnsen C, Hampton A, Stubbs E, Moore S, Eades S, D’Aprano A, Goldfeld S. **“It’s gotta be done right way”: a qualitative study exploring the acceptability of a proposed longitudinal cohort study of young Aboriginal children in Alice Springs.** BMC Health Serv Res. 2023;23(1):1210. Available from: <https://doi.org/10.1186/s12913-023-10148-9>.
5. Manshadi A, Stelkia K. **Indigenous Health Research Mentorship within Post-Secondary Institutions in Canada, the United States, Australia, and New Zealand: A Scoping Review.** Int J Environ Res Public Health. 2023;20(21):6973. Available from: <https://www.mdpi.com/1660-4601/20/21/6973>.
6. Factor-Inwentash Faculty of Social Work University of Toronto, Association of Native Child and Family Services Agencies of Ontario. **The Outcomes of Indigenous Youth Aging Out of Care and Exiting Care in Canada.** Toronto, ON: University of Toronto, Faculty of Social Work; the Association of Native Child and Family Services Agencies of Ontario; and Making the Shift; 2023. Available from: <https://cwrp.ca/sites/default/files/publications/v7.%20Environmental%20Scan%20-%20The%20Outcomes%20of%20Indigenous%20Youth%20Aging%20Out%20of%20Care%20and%20Exiting%20Care%20in%20Canada.pdf>.

## MIDDLE YEARS

1. Drumm K, Vandermause R. **Adolescents Concerned about Climate Change: A Hermeneutic Study.** Int J Environ Res Public Health. 2023;20(22):7063. Available from: <https://www.mdpi.com/1660-4601/20/22/7063>.
2. Sahib A, Chen J, Reynolds KJ, Cárdenas D. **The curative effect of schools: A longitudinal study of the impact of school climate, school identification, and resilience on adolescent mental health.** School Psychology. 2023. Available from: <https://doi.org/10.1037/spq0000571>.
3. Smith ACG, Crooks CV, Baker L. **“You Have to be Resilient”: A Qualitative Study Exploring Advice Newcomer Youth Have for Other Newcomer Youth.** Child Adol Soc Work J. 2023;40(6):761-71. Available from: <https://link.springer.com/article/10.1007/s10560-021-00807-3>.

## POLICY, PRACTICE, INTERVENTIONS

1. Zhong A, Yin L, O’Sullivan B, Ruetz AT. **Historical lessons for Canada’s emerging national school food policy: an opportunity to improve child health.** Health promotion and chronic disease prevention in Canada : research, policy and practice. 2023;43(9):421-5. Available from: <https://doi.org/10.24095/hpcdp.43.9.04>.
2. Amanat H. **Canada ranks as second-best country in the world in 2023: U.S. News.** 2023 Sep 8. Available from: <https://www.ctvnews.ca/world/canada-ranks-as-second-best-country-in-the-world-in-2023-u-s-news-1.6554229>.



3. Public Health Agency of Canada. **How healthy are people in Canada? An indicators dashboard**. Ottawa, ON: Public Health Agency of Canada; 2023. Available from: <https://health-infobase.canada.ca/health-of-people-in-canada-dashboard/#wb-cont>.
4. Public Health Agency of Canada. **Creating the conditions for resilient communities: a public health approach to emergencies. Chief Public Health Officer of Canada's Report on the State of Public Health in Canada 2023**. Ottawa, ON: Government of Canada; 2023 Oct. Available from: [https://www.canada.ca/en/public-health/corporate/publications/chief-public-health-officer-reports-state-public-health-canada/state-public-health-canada-2023.html?utm\\_campaign=hc-sc-cpho-report-launch-23-24&utm\\_medium=eml&utm\\_source=statement&utm\\_content=report-en](https://www.canada.ca/en/public-health/corporate/publications/chief-public-health-officer-reports-state-public-health-canada/state-public-health-canada-2023.html?utm_campaign=hc-sc-cpho-report-launch-23-24&utm_medium=eml&utm_source=statement&utm_content=report-en).
5. Public Health Ontario. **Risk Factors for Healthy Child Development Snapshot PHU (2015 to 2022)**. Toronto, ON: Public Health Ontario; 2023 Oct. Available from: <https://www.publichealthontario.ca/en/Data-and-Analysis/Reproductive-and-Child-Health/Healthy-Child-Development>.
6. Saskatchewan Health Care Administration and Provider Resources. **Saskatchewan's Children and Youth Strategy. Strong families. Strong communities. A better quality of life**. Regina, SK: Government of Saskatchewan; 2023 Oct. Available from: <https://publications.saskatchewan.ca/api/v1/products/122261/formats/141835/download>.
7. Smith A, Peled M, Saewyc E, McCreary Centre Society. **Searching for a place: The health and well-being of homeless and unstably housed youth in BC**. Vancouver, BC: McCreary Centre Society; 2023. Available from: [https://mcs.bc.ca/pdf/searching\\_for\\_a\\_place.pdf](https://mcs.bc.ca/pdf/searching_for_a_place.pdf).

## SCREENING (tools, methods, school readiness, etc)

1. Barnett LM, Jerebine A, Keegan R, Watson-Mackie K, Arundell L, Ridgers ND, et al. **Validity, Reliability, and Feasibility of Physical Literacy Assessments Designed for School Children: A Systematic Review**. Sports Med. 2023;53(10):1905-29. Available from: <https://link.springer.com/article/10.1007/s40279-023-01867-4>.
2. Elwick S, Wong S, Harrison L, Williams KE, McFarland L, Dealtry L, Janus M. **Feasibility and Potential Benefits of the Observe, Reflect, Improve Children's Learning (ORICL) Tool: Perspectives of Infant-Toddler Educators**. Australasian Journal of Early Childhood. 2023;48(3):203-16. Available from: <https://researchers.mq.edu.au/en/publications/feasibility-and-potential-benefits-of-the-observe-reflect-improve>.
3. Komanchuk J, Cameron JL, Kurbatfinski S, Duffett-Leger L, Letourneau N. **A realist review of digitally delivered child development assessment and screening tools: Psychometrics and considerations for future use**. Early Hum Dev. 2023;183:105818. Available from: <https://www.sciencedirect.com/science/article/pii/S0378378223001147>.
4. United Nations Children's Fund (UNICEF). **The Early Childhood Development Index 2030. A new measure of early childhood development**. New York, NY: UNICEF; 2023 Sep. Available from: [https://data.unicef.org/wp-content/uploads/2023/09/ECDI2030\\_Technical\\_Manual\\_Sept\\_2023.pdf](https://data.unicef.org/wp-content/uploads/2023/09/ECDI2030_Technical_Manual_Sept_2023.pdf).

## SOCIAL DETERMINANTS

1. Alom J. **If social determinants of health lead to death then we should list them on death certificates**. BMJ. 2023;383:p2666. Available from: <https://www.bmj.com/content/bmj/383/bmj.p2666.full.pdf>.
2. Boccia D, Maritano S, Pizzi C, Richiardi MG, Lioret S, Richiardi L. **The impact of income-support interventions on life course risk factors and health outcomes during childhood: a systematic review in high income countries**.

- BMC Public Health. 2023;23(1):1-18. Available from:  
<https://bmcpublichealth.biomedcentral.com/articles/10.1186/s12889-023-15595-x>.
- Salami OO, Yaskina M, Georgiades K, Diaz E, Hegadoren K, Meherali S, et al. **Mental Health of Immigrant Children and Adolescents (6-17 Years) in Canada: Evidence from the Canadian Health Measures Survey.** Int J Environ Res Public Health. 2023;20:NA. Available from:  
<https://link.gale.com/apps/doc/A772532788/HRCA?u=ubcolumbia&sid=bookmark-HRCA&xid=144165df>.
  - Gallup, Ando F. **Recipes for Wellbeing Report: The First Global Study on Food Enjoyment, Healthy Eating, Choices in Types of Food and Subjective Wellbeing.** Gallup; 2023 2023-10-18. Available from:  
<https://policycommons.net/artifacts/5043104/untitled/>.

## SOCIOEMOTIONAL

- Pérez-Clark P, Royer DJ, Austin KS, Lane KL. **A systematic review of Second Step social-emotional skills program in middle schools.** Remedial and Special Education. 2023;44(5):395-408. Available from:  
<https://doi.org/10.1177/07419325221131913>.

## SPECIAL (COVID-19, media, other)

### COVID-19

- Mitra R, Campbell JE, Vanderloo LM, Faulkner G, Tremblay MS, Rhodes RE, et al. **Child and youth physical activity throughout the COVID-19 pandemic: The changing role of the neighbourhood built and social environments.** Health Place. 2023;84:103127. Available from: <https://www.ncbi.nlm.nih.gov/pubmed/37751631>.
- Oostrom TGA, Cullen P, Peters SAE. **The indirect health impacts of the COVID-19 pandemic on children and adolescents: A review.** Journal of Child Health Care. 2023;27(3):488-508. Available from:  
<https://doi.org/10.1177/13674935211059980>.
- Wendel F, Bender S, Breiting E, Coenen M, Hummel J, Immich G, et al. **Interventions to build resilience and to ameliorate negative psychosocial effects of the COVID-19 pandemic on children and adolescents: a systematic review and meta-analysis.** Eur Child Adolesc Psychiatry. 2023. Available from:  
<https://doi.org/10.1007/s00787-023-02280-y>.

-----  
Please cite as:

Human Early Learning Partnership. **HELP Reads –November issue.** Vancouver, BC: University of British Columbia, Faculty of Medicine, School of Population and Public Health, HELP. 2023 Nov. Available from:  
[https://earlylearning.ubc.ca/resources/mediatype/help\\_reads/](https://earlylearning.ubc.ca/resources/mediatype/help_reads/).

---

The Human Early Learning Partnership is situated within the traditional, ancestral and unceded territory of the x<sup>w</sup> mæθk<sup>w</sup> əy' əm (Musqueam) People.

HUMAN  
EARLY LEARNING  
PARTNERSHIP



For more information visit  
[www.earlylearning.ubc.ca/library/citations](http://www.earlylearning.ubc.ca/library/citations)

**Michele Wiens, Senior Manager**  
(Knowledge Management)  
Email [michele.wiens@ubc.ca](mailto:michele.wiens@ubc.ca)

Faculty of Medicine, SPPH  
2206 East Mall, UBC  
Vancouver, BC V6T 1Z3  
**Phone** 604. 822. 1278  
**Email** [earlylearning@ubc.ca](mailto:earlylearning@ubc.ca)  
**Web** [www.earlylearning.ubc.ca](http://www.earlylearning.ubc.ca)