



THE EARLY DEVELOPMENT INSTRUMENT: Aboriginal Data



The Early Development Instrument (EDI) is a questionnaire completed by Kindergarten teachers in B.C. It measures 5 core areas of early child development that are known to be good predictors of adult health, education and social outcomes:

Physical Health & Well-being



Social Competence



Emotional Maturity



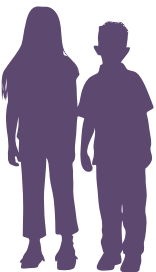
Language & Cognitive Development



Communication Skills



The data that the EDI gathers allow us to understand trends in child development across the province. Knowing how children are actually faring can help organizations, communities and governments to plan more effectively and provide better supports and services for families and young children.

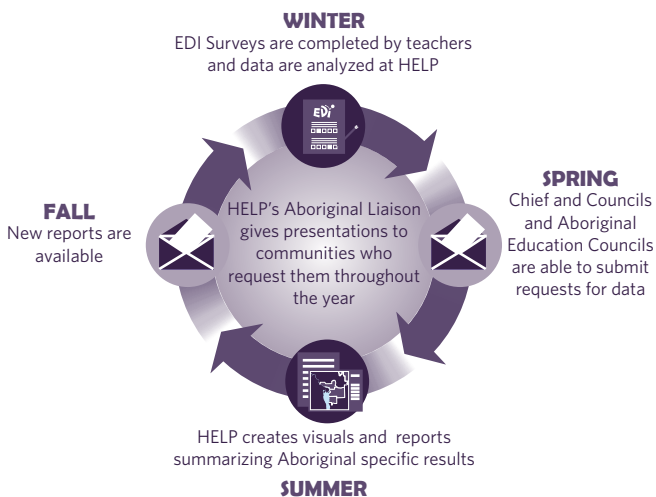


The Human Early Learning Partnership has gathered EDI data in B.C. for over 10 years. Many of the children included in our EDI data are Aboriginal; children who attend both public schools and First Nations schools.

When data for Aboriginal children are extracted they can be invaluable in making informed decisions about programs and services for Aboriginal children.

Requesting EDI Aboriginal Data:

HELP honours the principles of OCAP (Ownership, Control, Access and Possession) in working with EDI results. EDI data and reports can be requested from HELP, by Chief and Councils and Aboriginal Education Councils. EDI reporting follows a regular cycle



HELP has strict guidelines for the release of EDI data and reports to Chief and Councils and Aboriginal Education Councils. These guidelines were created by HELP's Aboriginal Steering Committee(ASC) and emphasize the importance of meaningful community engagement. They also encourage active progress on an Aboriginal Education Enhancement Agreement.

If your Council has a specific data request or would like to receive EDI reports for children of Aboriginal ancestry in your School District, we would like to hear from you. We would also be very pleased to visit your community. Please contact us.

For more information please contact:

Aboriginal Community Liaison Coordinator

aboriginal.liaison@help.ubc.ca

(604) 827-5081

www.earlylearning.ubc.ca/edi/aboriginal-EDI

Human Early Learning Partnership
440-2206 East Mall, UBC
Vancouver, BC, V6T 1Z3

Graphic: Alano Edzerza, Tahltan Nation

**HUMAN
EARLY LEARNING
PARTNERSHIP**